

HARBORVIEW
MEDICAL CENTER



UW Medicine  King County

King County

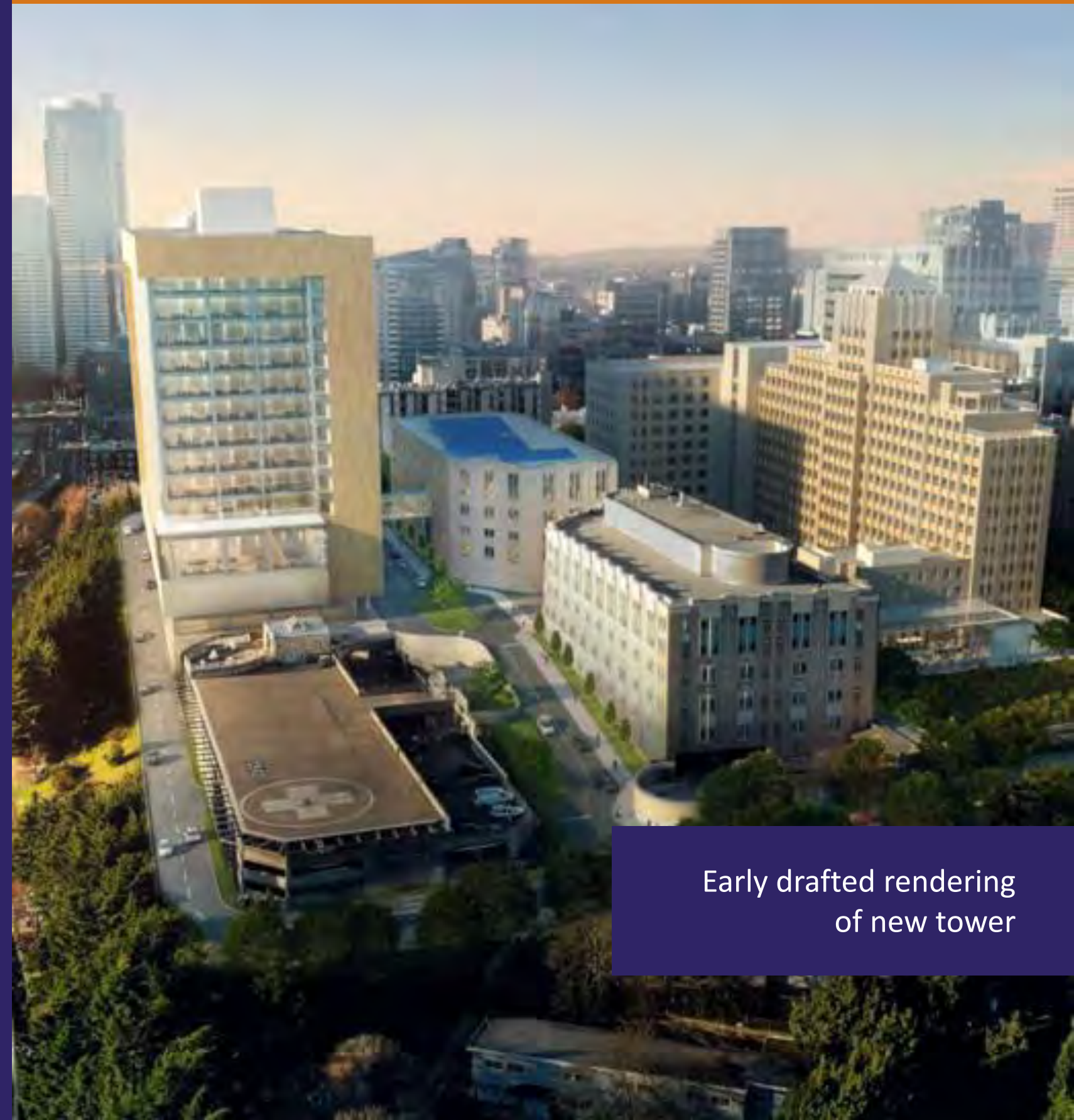
HARBORVIEW BOND PROGRAM*

Focused on the
future of Harborview

June 2023

*The Harborview Bond Program is a King County & UW Medicine Collaboration

[KingCounty.gov/Harborview](https://kingcounty.gov/Harborview)



Early drafted rendering
of new tower

ABOUT HARBORVIEW BOND PROGRAM



\$1.74 Billion
Approved by voters
in bond funding



Construct new and modern
healthcare facilities and seismic
improvements

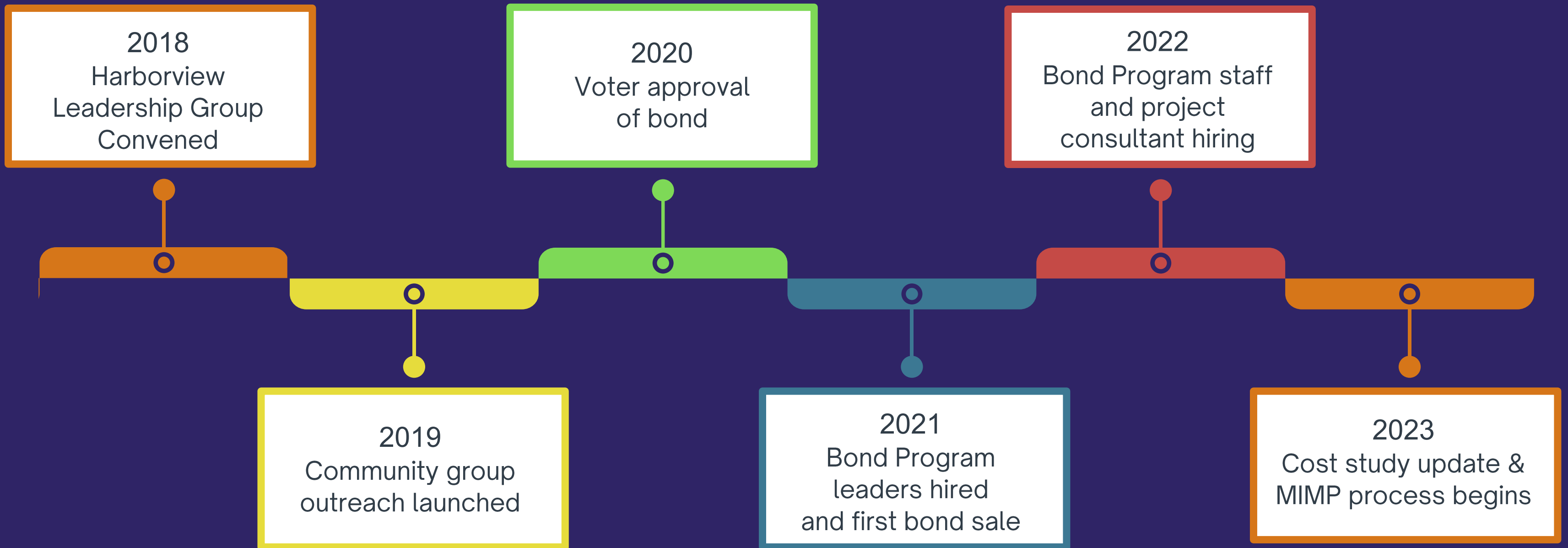
ABOUT

BOND PROGRAM GOALS

- New Hospital Tower
- New Behavioral Health Services Facilities
- Existing Hospital Space Renovations
- Seismic Renovations
 - Harborview Hall
 - Center Tower Seismic
 - Pioneer Square Clinic
- East Clinic Demolition



KEY BOND ACTIVITIES TO DATE





OVERVIEW

- Background and Bond partners
- Where are we in the process ?
- Building criteria to support an RFP
- Connect with us

PHASES OF THE BOND WORK

1 PROGRAM STARTUP 

2 PROJECT PROGRAMMING AND PHASING 

3 PRE-DESIGN 

4 DESIGN 

5 CONSTRUCTION 

PROGRAMMING AND PHASING INCLUDES



Critical phasing pathways and needs



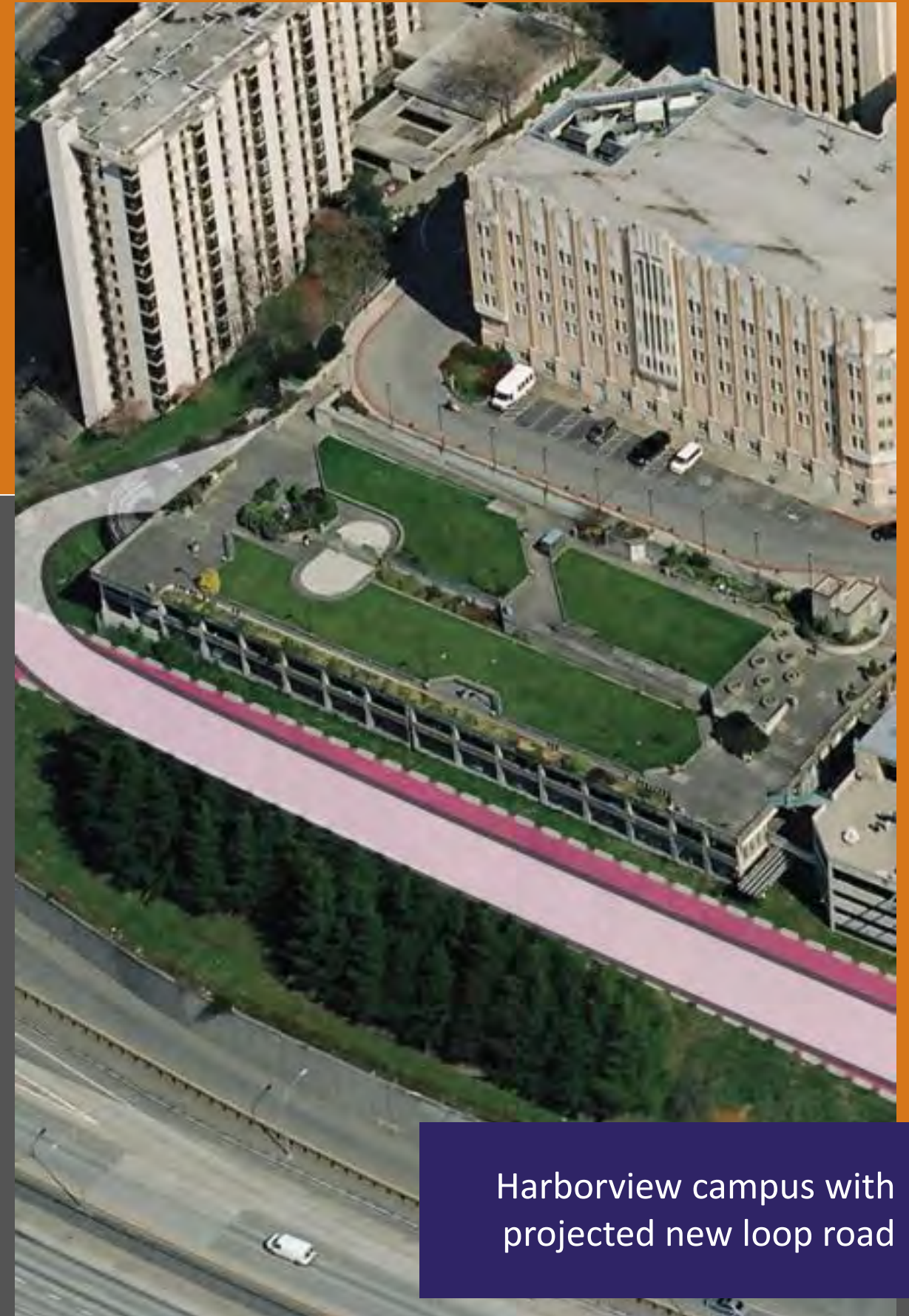
Major Institution Master Plan (MIMP)



WSDOT Engagement



Additional Activities (e.g., CPARB and Pre Design)

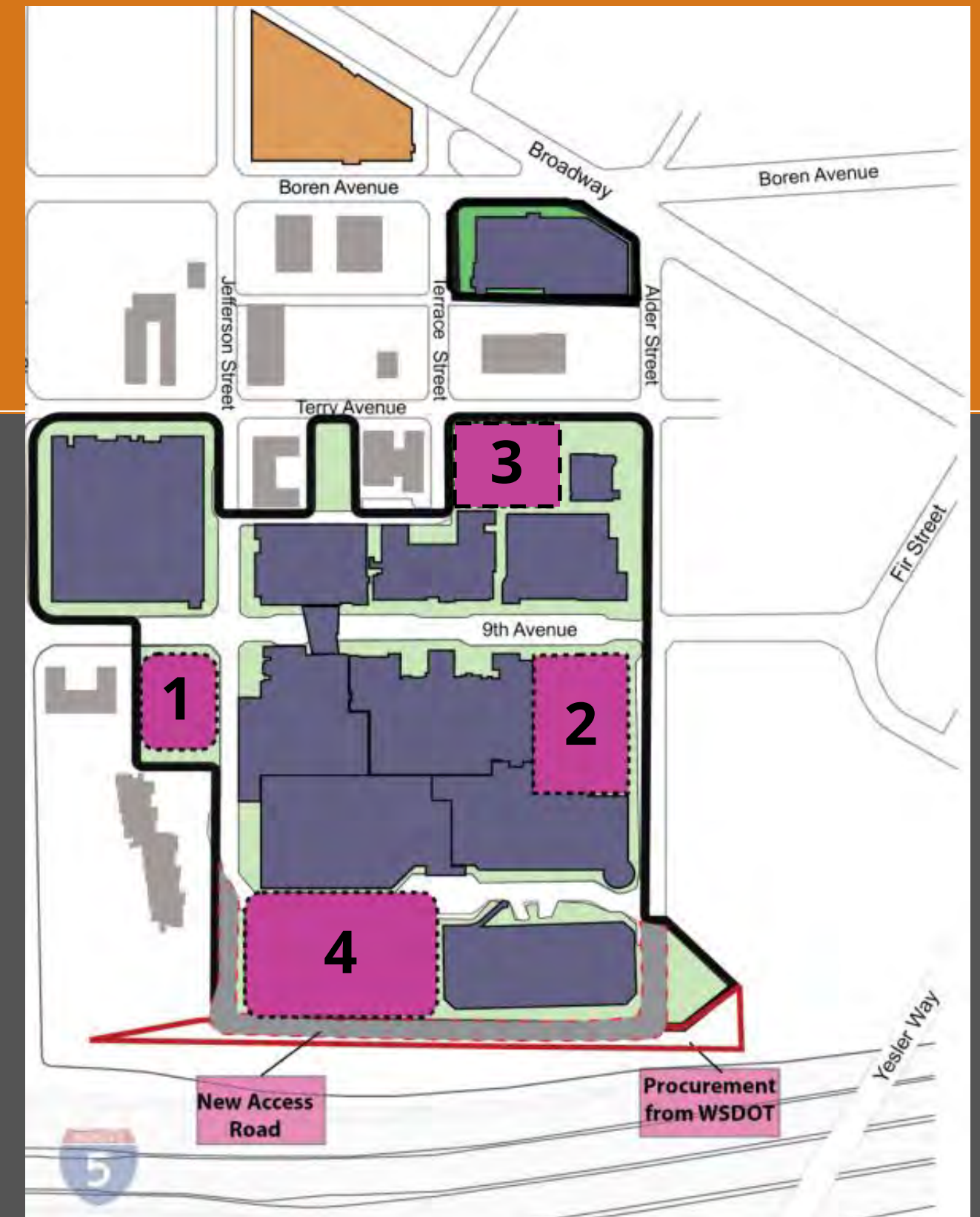


Harborview campus with projected new loop road

SITEMAP

HARBORVIEW CAMPUS

Major Amendment Projects	Planned/Potential
1. Multipurpose building size increase	Potential
2. New MOB in place of East Clinic	Potential
3. Facilities removal	Potential
4. New tower	Planned



CAMPUS IMPROVEMENTS

NEW MEDICAL TOWER, PHASE 1 FOCUS



State-of-the-art
technology



Expanded and
updated emergency
department



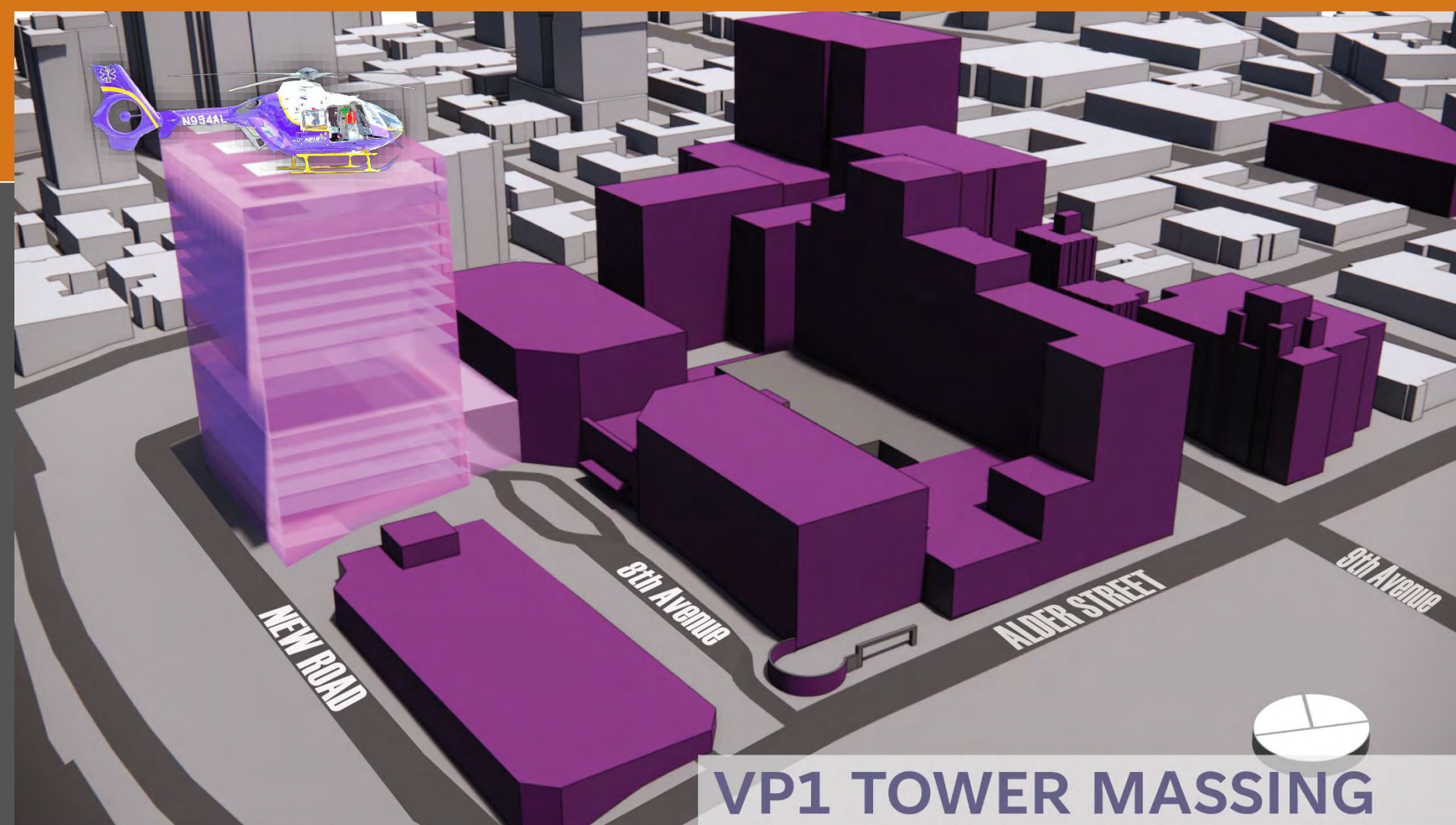
Expansion of
single beds



Improved access for patients,
staff and visitors

ADDITIONAL IMPROVEMENTS

- Expanded operating rooms
- Support services for new tower
- Utility and infrastructure



PROJECT DELIVERY

- Contract will be with King County
- CPARB
- Project delivery method TBD
- Looking to maximize opportunity



PLANNED 2023 RFP OPPORTUNITIES

- Geotechnical RFP



FUTURE RFP WORK

- **Projected Tower RFP
2024, Third Quarter**



ABOUT HARBORVIEW MEDICAL CENTER



Level 1

Trauma Center

serves five-state
region



+100%

Works at more than
100% capacity due to
the growing needs

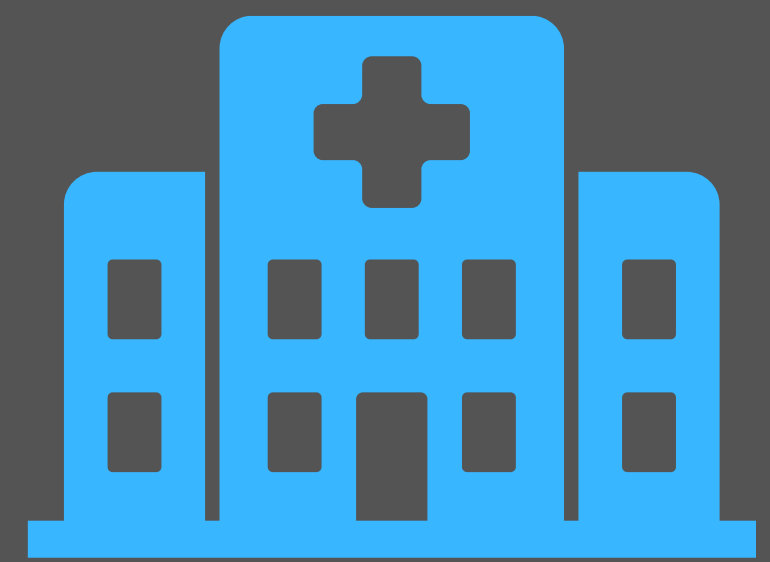


50+ Year

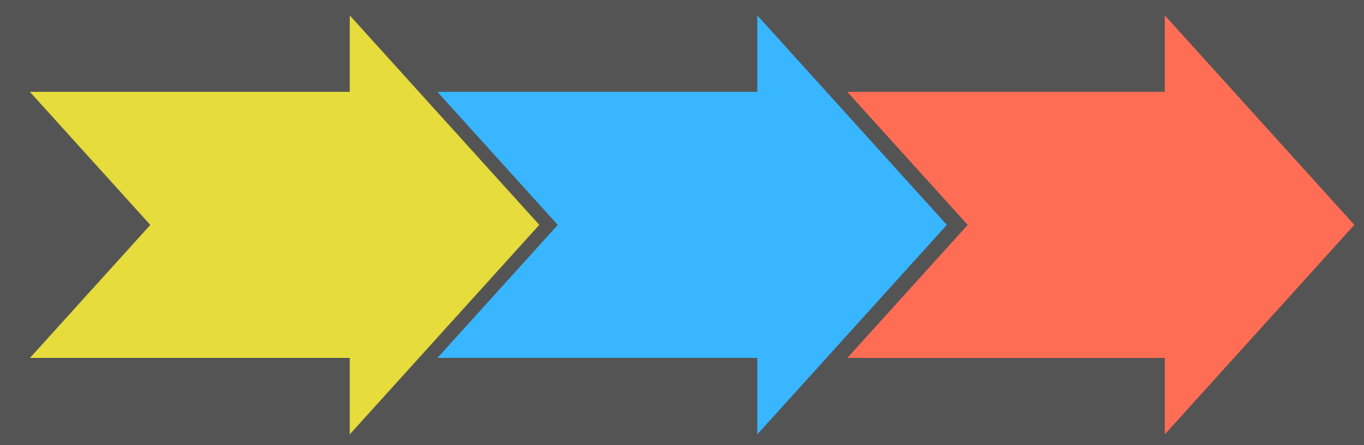
Partnership between
King County and
UW Medicine



ADDITIONAL DETAILS



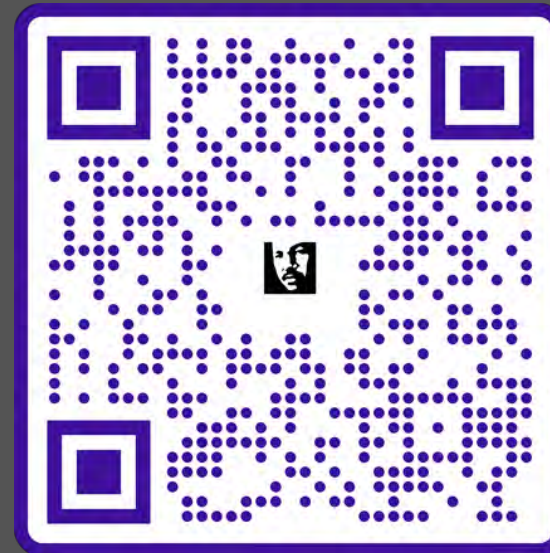
The hospital will remain **100% operable** throughout the hospital modernization.



Updated programming will inform phasing of the Bond work

CONNECT WITH US

Sign up for our newsletter at
[KingCounty.Gov/Harborview](https://www.kingcounty.gov/harborview)



QUESTIONS



